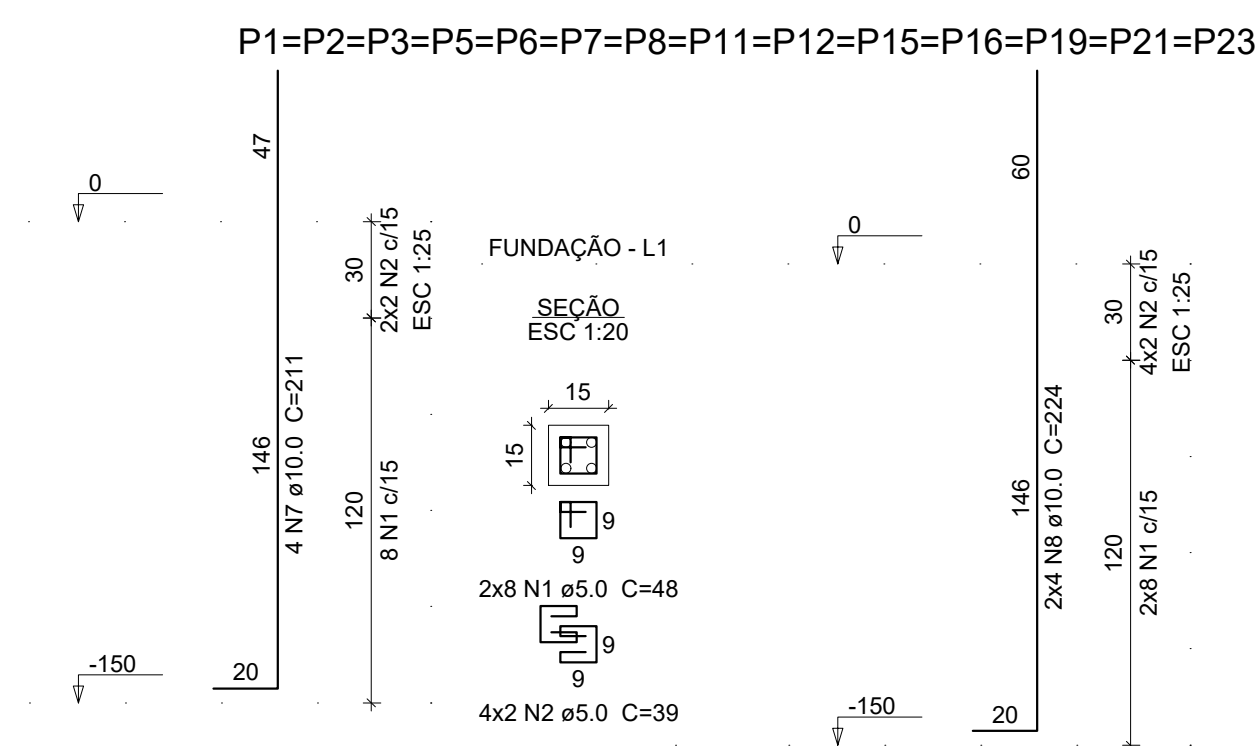
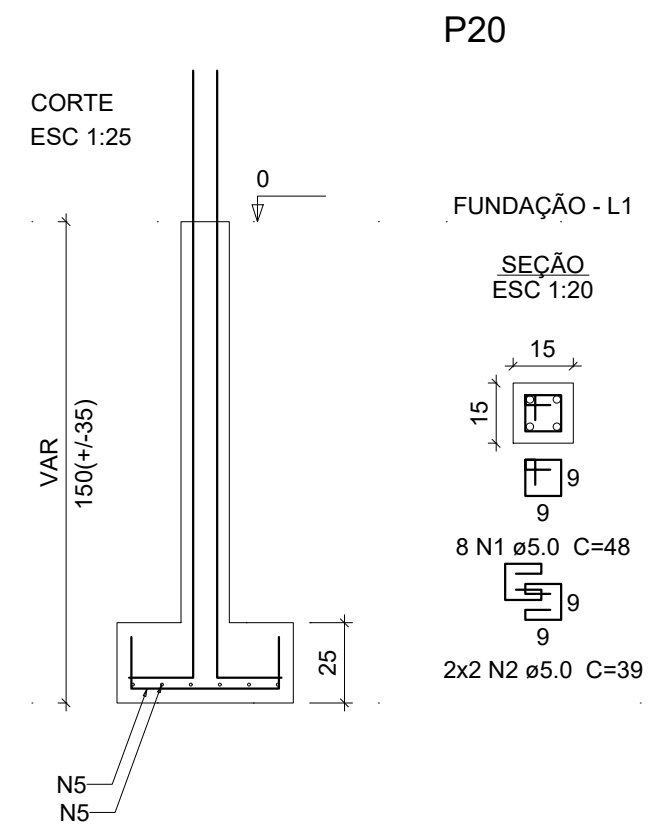
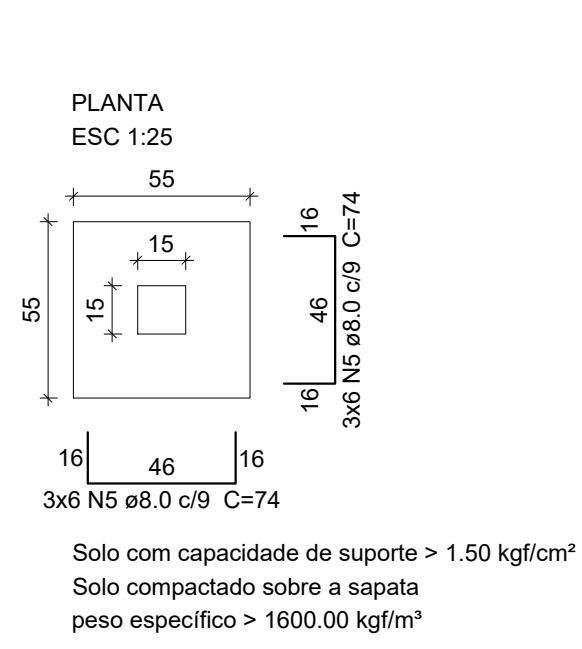


S1=S2=S3=S5=S6=S7=S8=S11=S12=S15=S16=S19=S20=S21=S23



Relação do aço

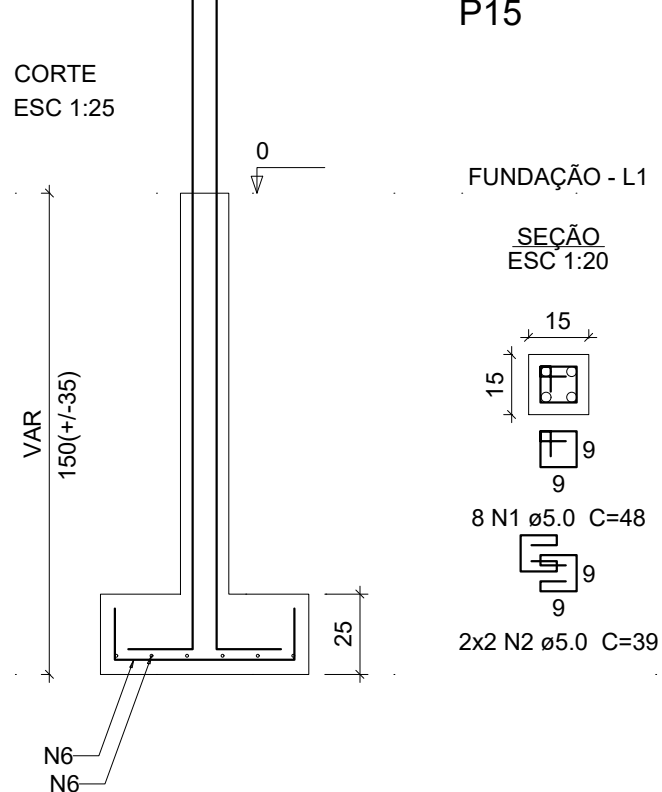
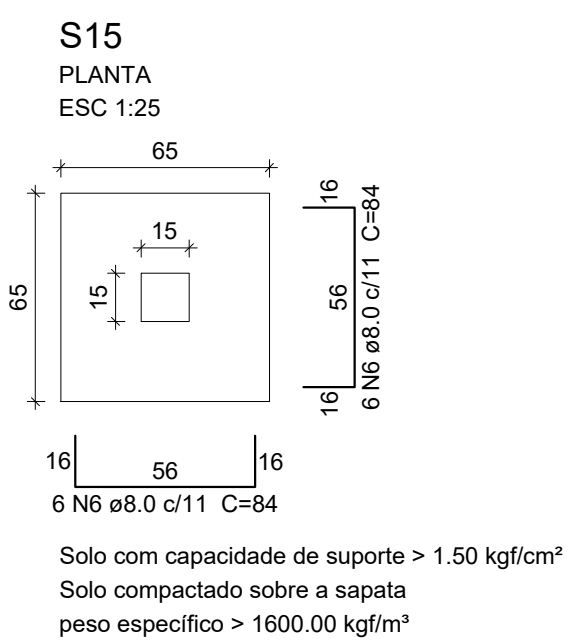
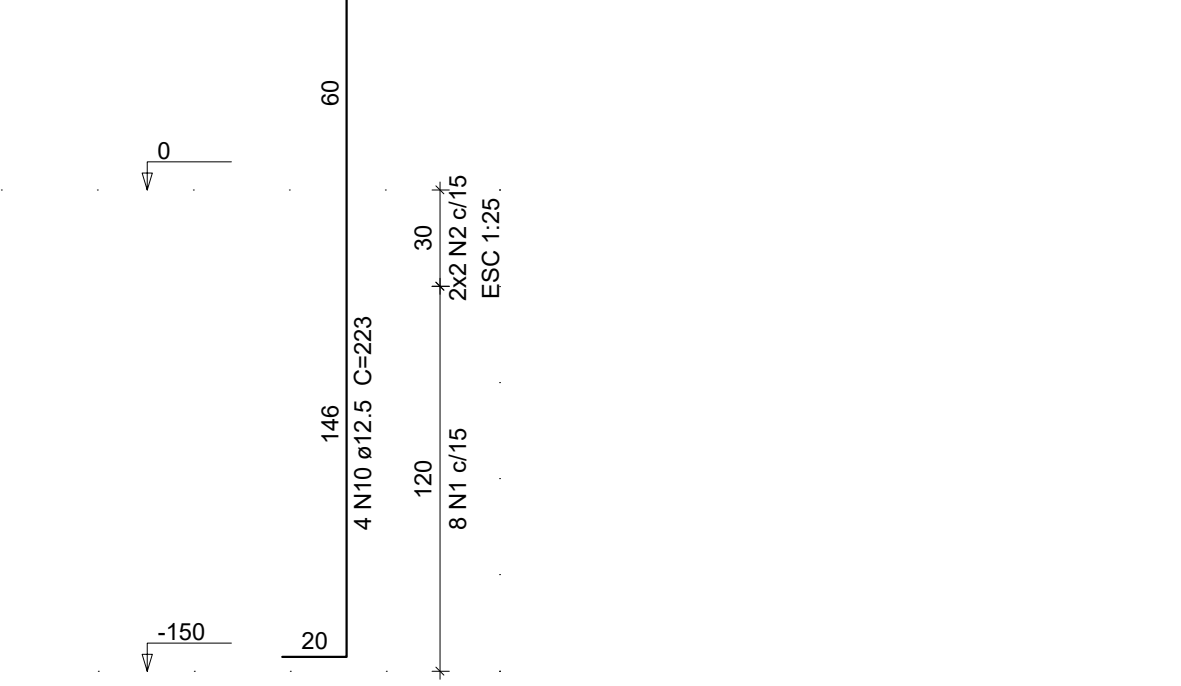
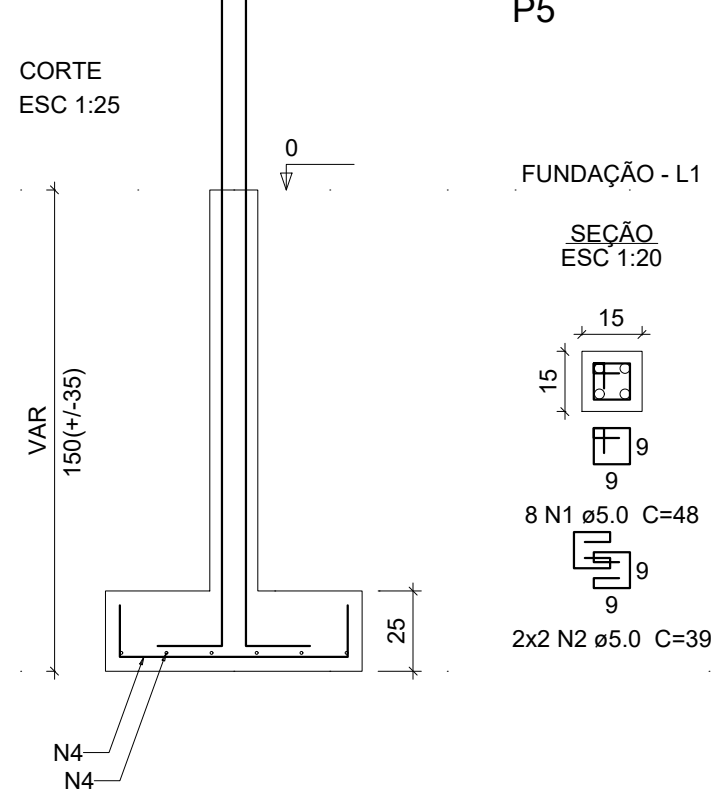
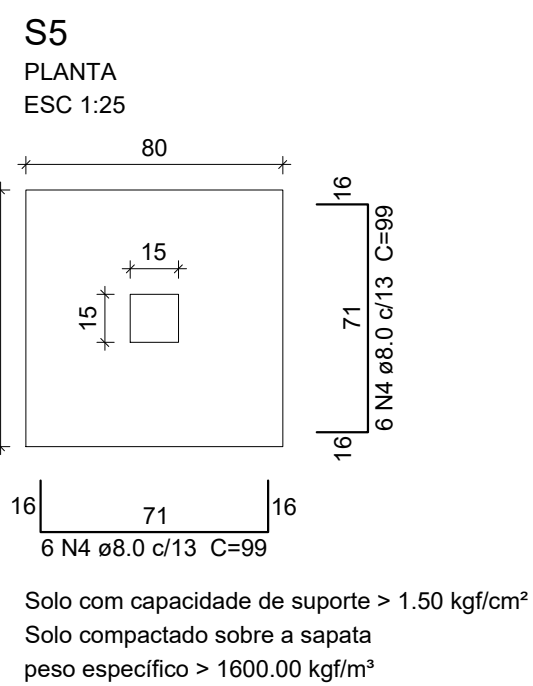
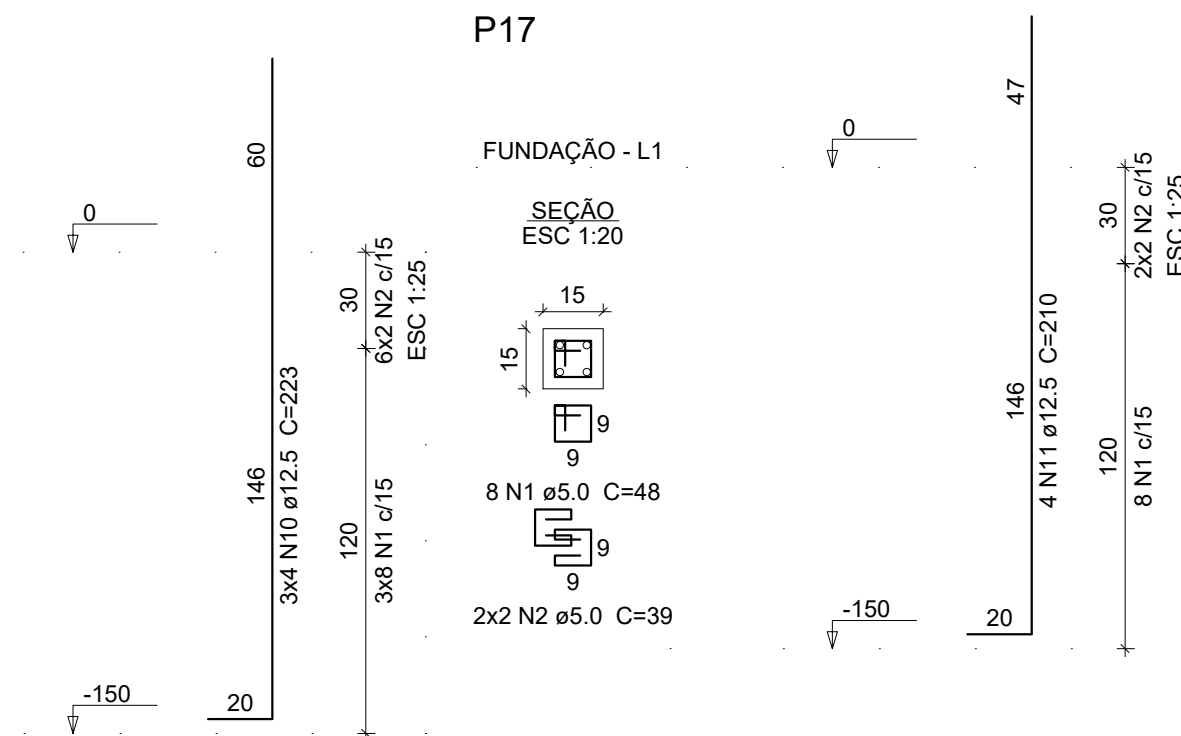
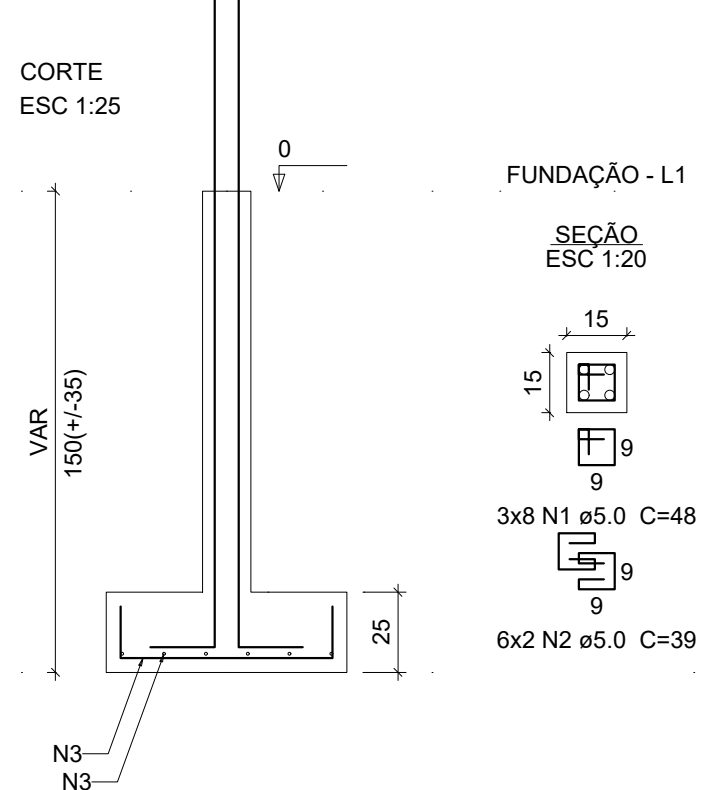
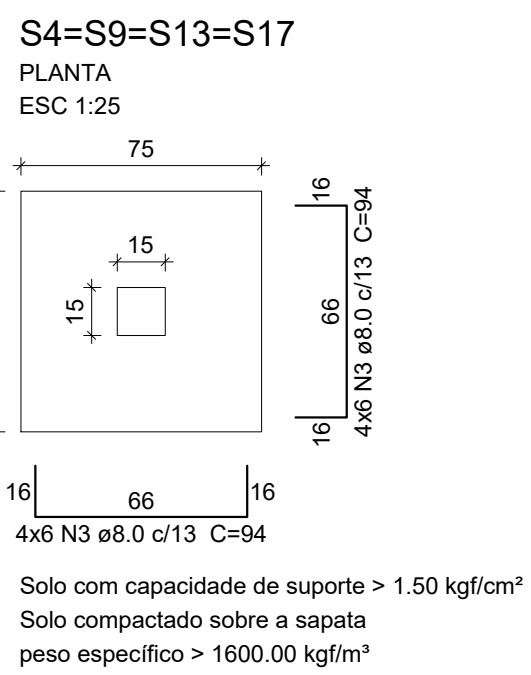
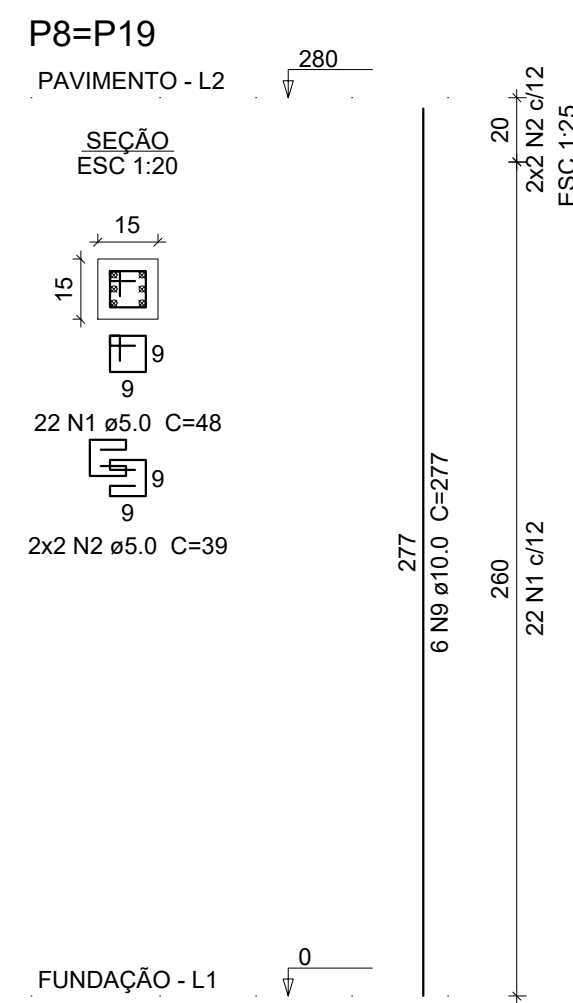
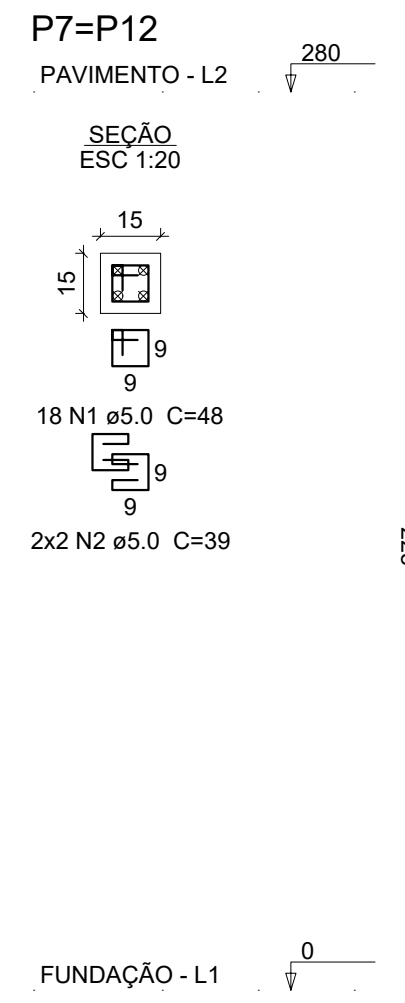
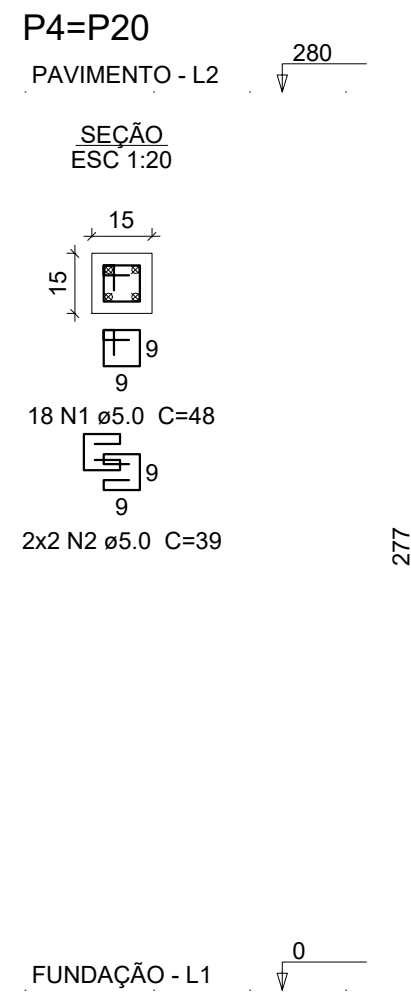
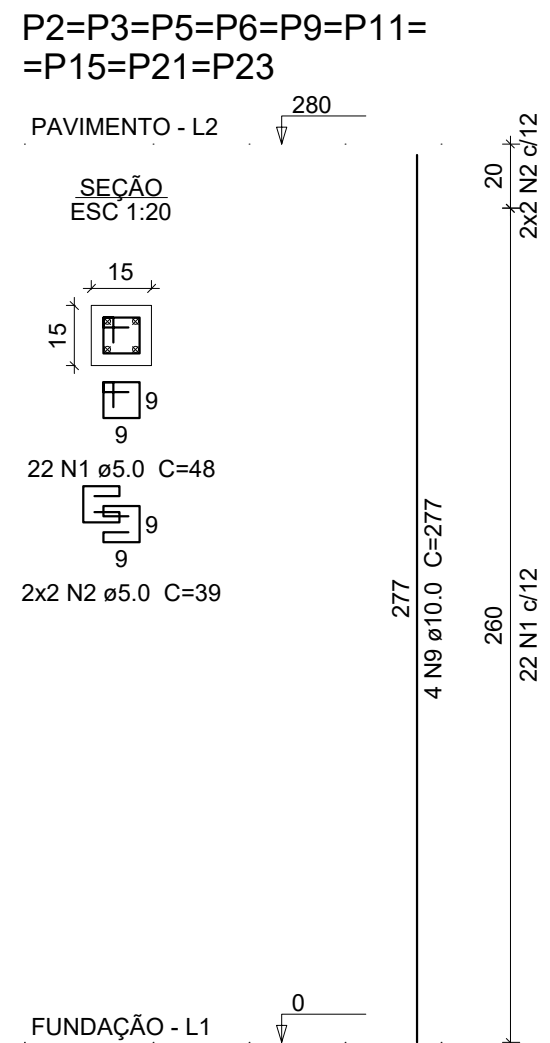
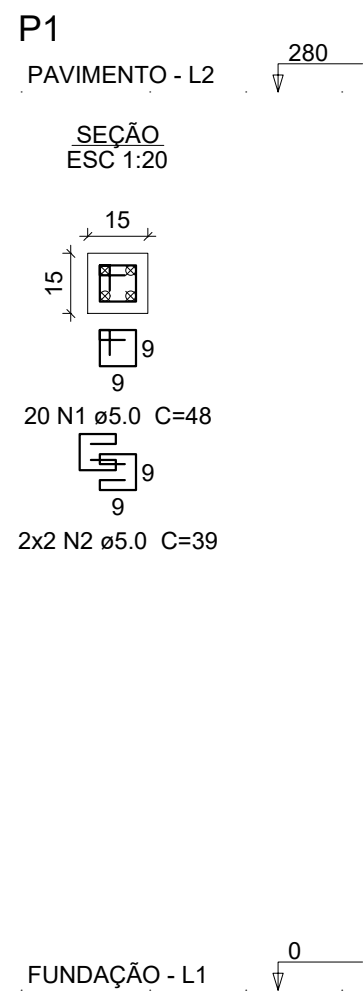
Fundação: S5 S13
S15 S20
Pavimento: P1 9xP2
2xP4 2xP7
2xP8

AÇO	N	DIAM (mm)	QUANT	C.UNIT (cm)	C.TOTAL (cm)
CA60	1	5.0	406	48	19488
	2	5.0	100	39	3900
CA50	3	8.0	48	94	4512
	4	8.0	12	99	1188
	5	8.0	180	74	13320
	6	8.0	12	84	1008
	7	10.0	4	211	844
	8	10.0	64	224	12544
	9	10.0	68	277	18836
	10	12.5	20	223	4460
	11	12.5	4	210	840

Resumo do aço

AÇO	DIAM (mm)	C.TOTAL (m)	PESO + 10 % (kg)
CA50	8.0	226.5	98.2
	10.0	322.24	218.7
	12.5	53	56.2
CA60	5.0	233.9	39.7
PESO TOTAL (kg)			
CA50		376.1	
CA60		39.7	

Volume de concreto (C-25) = 3,61 m³
Área de forma = 27.4 m²



OBRA
Comunidade Santo Antônio - Cotiporã/RS

Construção de área coberta,
banheiro e vestiário

PROJETO ARQUITETÔNICO

Eng. Civil Cristiano Fugali
PROPRIETÁRIO
PREFEITURA MUNICIPAL DE COTIPORÃ
EXECUÇÃO

CREA/RS 236549
CNPJ: 90.898.487/0001-64

COLABORAÇÃO
Jordana Bergamin Regla

ASSUNTO
SAPATAS E PILARES

PROTOCOLADO EM:
APROVADO EM:
VERSÃO
DATA 10/02/2020
ESCALA INDICADA

PRANCHA
05