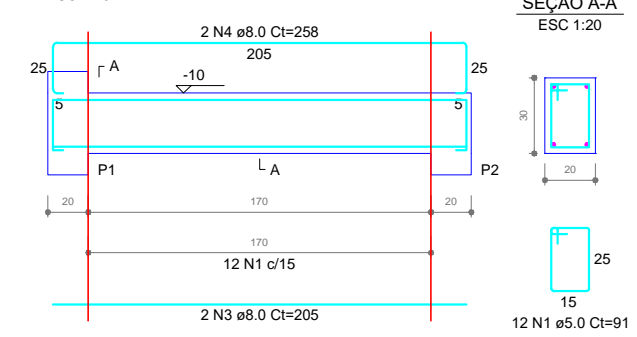
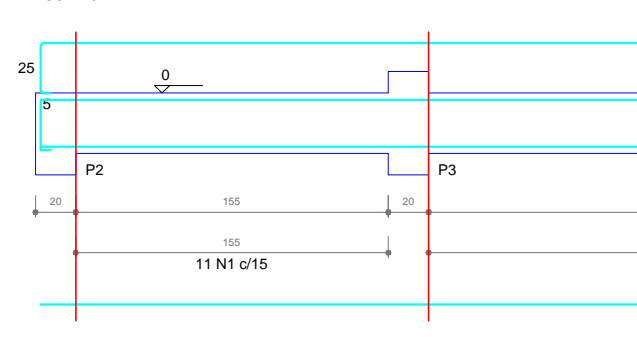


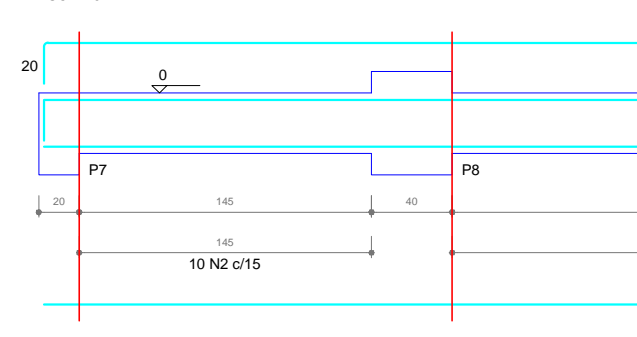
V1 (20 x 30)



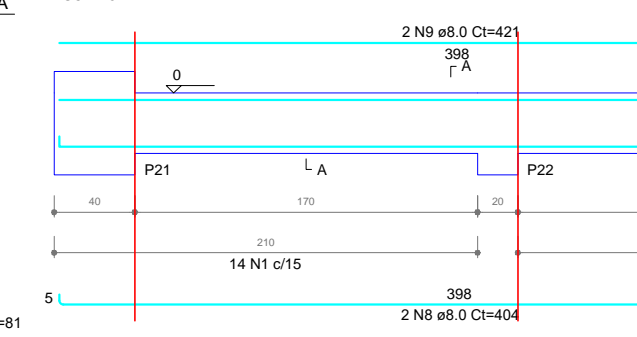
V2 (20 x 30)



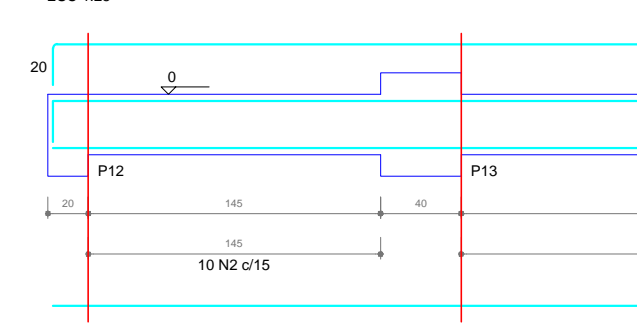
V3 (15 x 30)



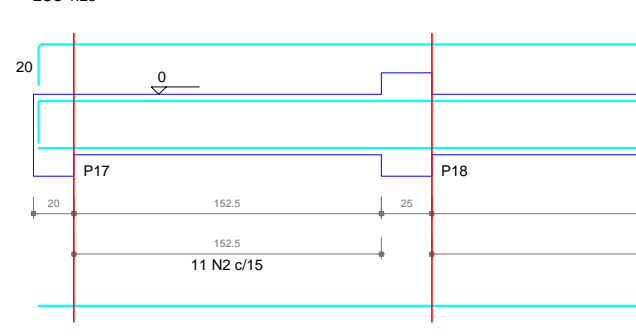
V6 (20 x 30)



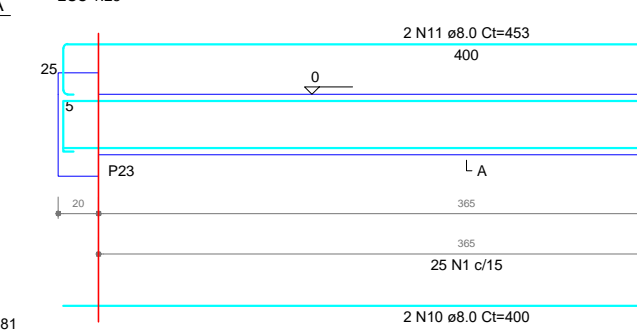
V4 (15 x 30)



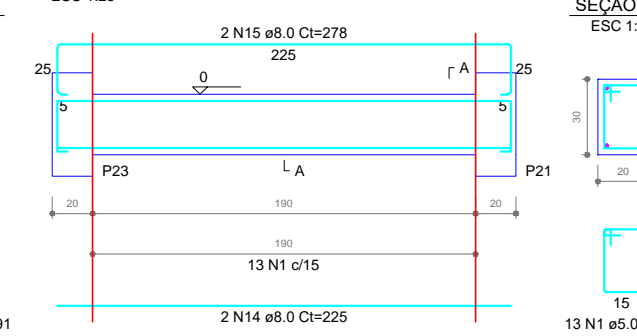
V5 (15 x 30)



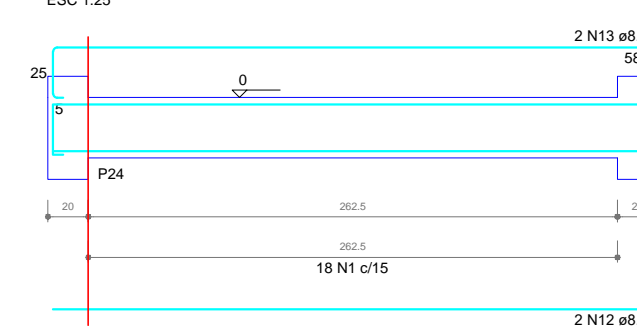
V7 (20 x 30)



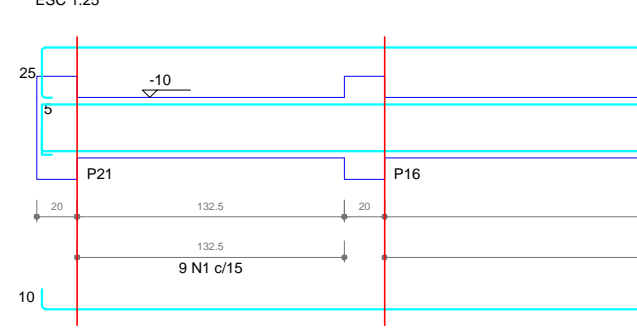
V9 (20 x 30)



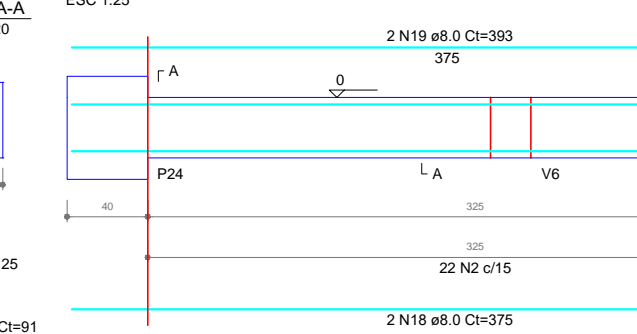
V8 (20 x 30)



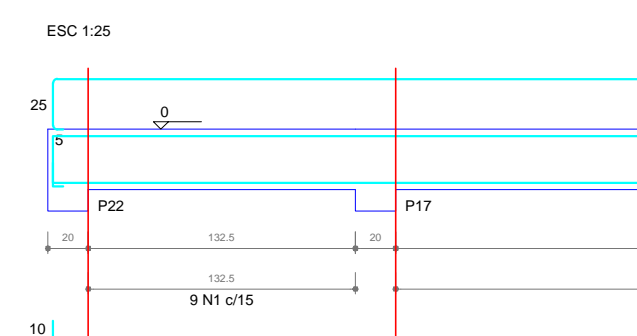
V10 (20 x 30)



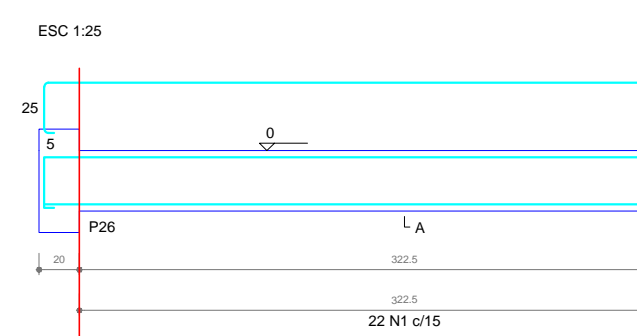
V12 (15 x 30)



V11 (20 x 30)



V13 (20 x 30)



RELAÇÃO DO AÇO

AÇO	N	DIAM (mm)	QUANT	C.UNIT (cm)	C.TOTAL (cm)
CA60	1	5.0	379	91	34489
CA60	2	5.0	159	81	12879
CA60	3	8.0	2	205	410
CA60	4	8.0	2	258	516
CA60	5	8.0	8	755	6040
CA60	6	8.0	2	808	1616
CA60	7	8.0	6	780	4680
CA60	8	8.0	2	454	908
CA60	9	8.0	2	421	842
CA60	10	8.0	2	450	900
CA60	11	8.0	2	453	906
CA60	12	8.0	2	580	1160
CA60	13	8.0	2	633	1266
CA60	14	8.0	2	225	450
CA60	15	8.0	2	278	556
CA60	16	8.0	4	1123	4492
CA60	17	8.0	4	1168	4672
CA60	18	8.0	2	375	750
CA60	19	8.0	2	383	766
CA60	20	8.0	2	978	1956
CA60	21	8.0	2	323	646
CA60	22	8.0	2	1199	2398
CA60	23	8.0	2	213	426

RESUMO DO AÇO

AÇO	DIAM (mm)	C.TOTAL (cm)	PESO + 10% (kg)
CA50	8.0	361.8	157
CA60	5.0	473.7	80.3
PESO TOTAL (kg)			237.3
CA50			157
CA60			80.3

Volume de concreto (C-25) = 4.88 m³
Área de forma = 69.09 m²

OBRA / LOCAL
SEDE ESPORTIVA COM VESTIÁRIOS
Parque Leonel Antônio Paludo, R. 1º de Maio, nº 200, CENTRO, COTIPORÁ / RS

PROPRIETÁRIO
Prefeitura Municipal de Cotiporá CNPJ: 90.898.487/0001-64

RESPONSÁVEL TÉCNICA
Engenheira Civil Camila Schmitt Caccia - CREA RS190280

ASSUNTO



DATA
DEZEMBRO/2021
COLABORAÇÃO
Mateus D. Zardo
ESCALA

1:150

PRANCHA

VIGAS BALDRAME

13