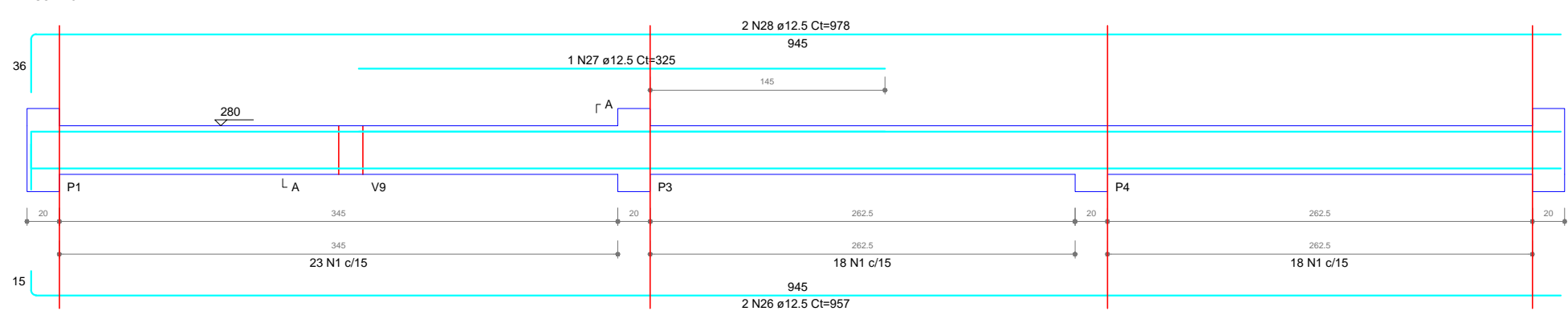
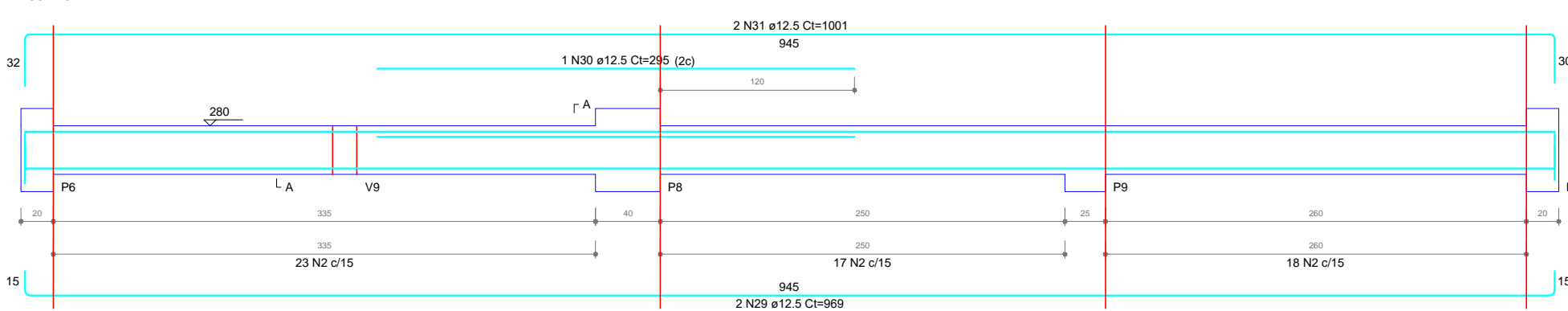


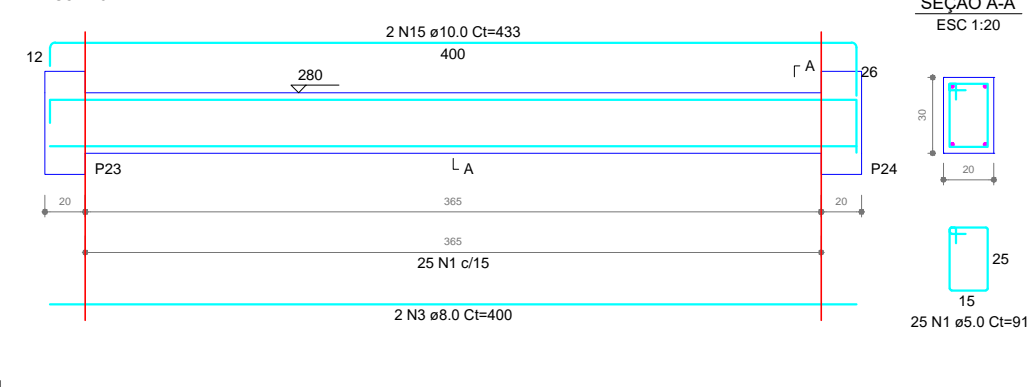
V1 (20 x 30)



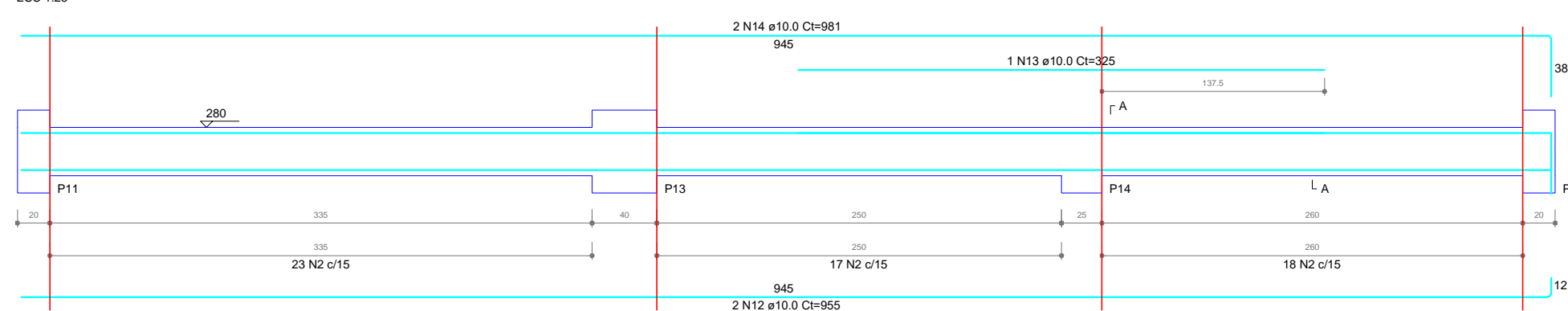
V2 (15 x 30)



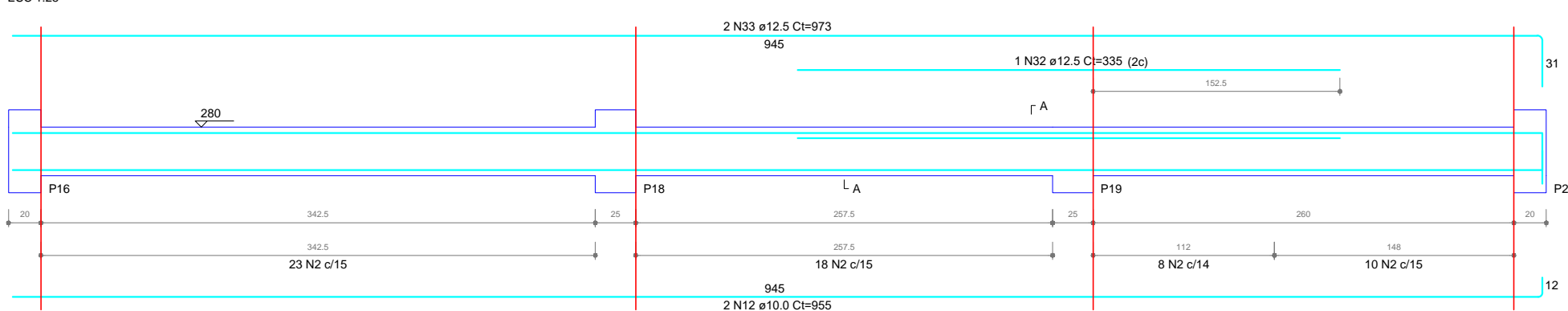
V5 (20 x 30)



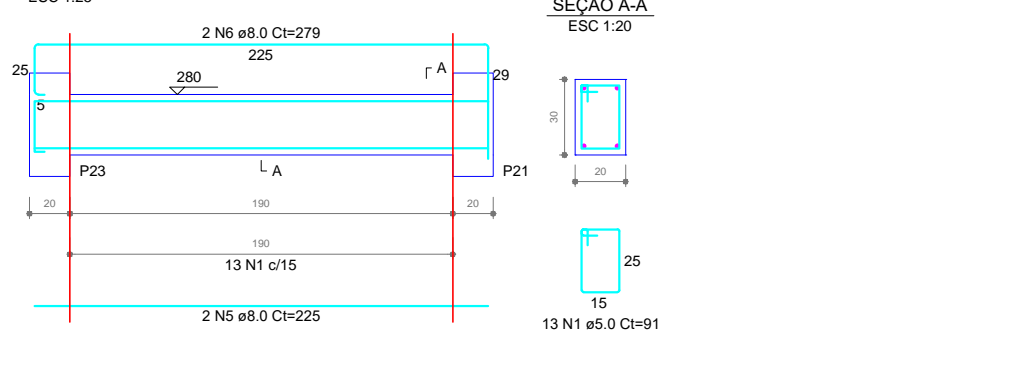
V3 (15 x 30)



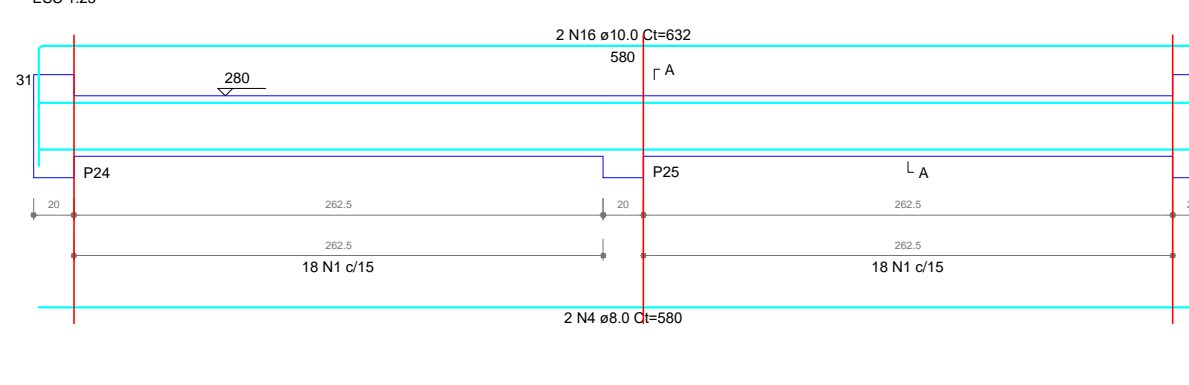
V4 (15 x 30)



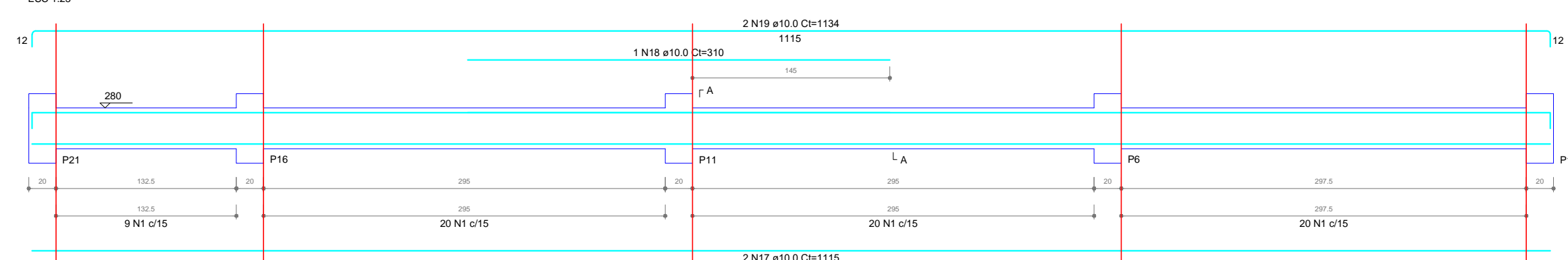
V7 (20 x 30)



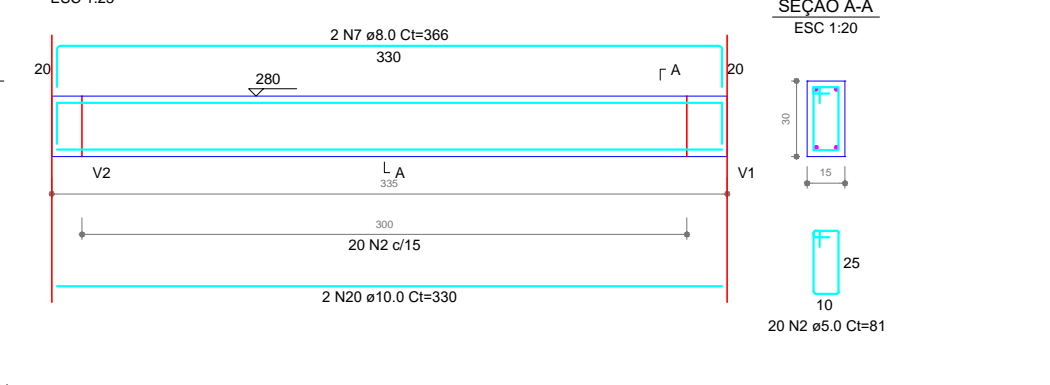
V6 (20 x 30)



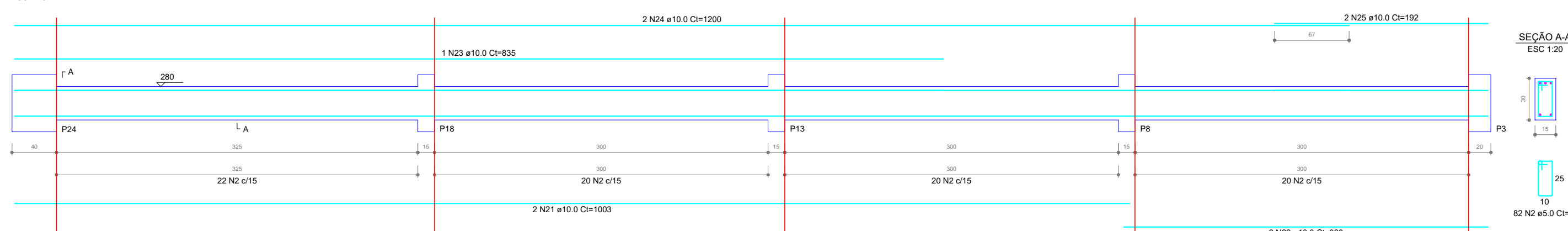
V8 (20 x 30)



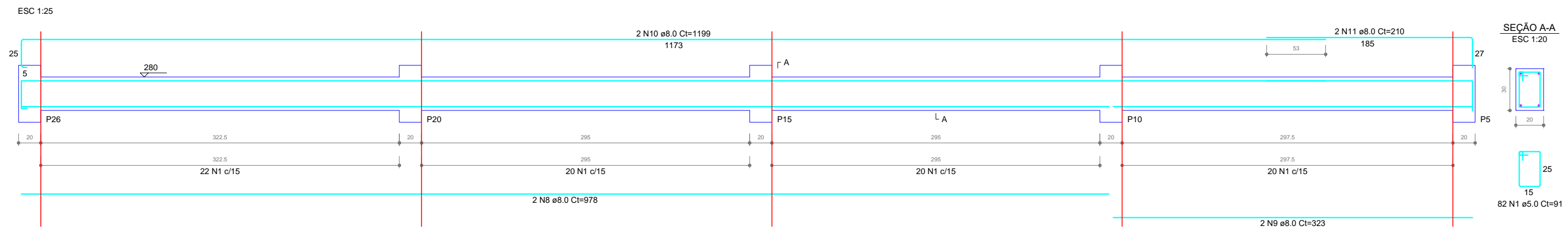
V9 (15 x 30)



V10 (15 x 30)



V11 (20 x 30)



RELAÇÃO DO AÇO

ACO	N	DIAM (mm)	QUANT	C.UNIT (cm)	C.TOTAL (cm)
CA60	1	5.0	284	91	25844
CA60	2	8.0	277	81	22437
CA50	3	8.0	2	400	800
CA50	4	8.0	2	580	1160
CA50	5	8.0	2	225	450
CA50	6	8.0	2	279	558
CA50	7	8.0	2	366	732
CA50	8	8.0	2	978	1956
CA50	9	8.0	2	323	646
CA50	10	8.0	2	1189	2378
CA50	11	8.0	4	210	840
CA50	12	10.0	4	655	2620
CA50	13	10.0	1	325	325
CA50	14	10.0	2	981	1962
CA50	15	10.0	2	433	866
CA50	16	10.0	2	632	1264
CA50	17	10.0	2	1115	2230
CA50	18	10.0	1	310	310
CA50	19	10.0	2	1134	2268
CA50	20	10.0	2	330	660
CA50	21	10.0	2	1003	2006
CA50	22	10.0	2	248	496
CA50	23	10.0	1	635	635
CA50	24	10.0	2	1200	2400
CA50	25	10.0	2	192	384
CA50	26	12.5	2	87	174
CA50	27	12.5	1	325	325
CA50	28	12.5	2	978	1956
CA50	29	12.5	2	989	1978
CA50	30	12.5	1	285	285
CA50	31	12.5	2	1001	2002
CA50	32	12.5	2	335	670
CA50	33	12.5	2	973	1946

RESUMO DO AÇO

ACO	DIAM (mm)	C.TOTAL (cm)	PESO + 10% (kg)
CA50	8.0	91.2	39.6
CA50	10.0	199.9	135.5
CA50	12.5	107.1	113.5
CA50	5.0	482.8	81.9
PESO TOTAL (kg)			
CA50	288.6		
CA60	81.9		

Volume de concreto (C-25) = 4.79 m³  
Área de forma = 70.66 m²

OBRA / LOCAL  
**SEDE ESPORTIVA COM VESTIÁRIOS**  
Parque Leonel Antônio Paludo, R. 1º de Maio, nº 200, CENTRO, COTIPORÁ / RS

PROPRIETÁRIO  
Prefeitura Municipal de Cotiporá CNPJ: 90.898.487/0001-64

RESPONSÁVEL TÉCNICA  
Engenheira Civil Camila Schmitt Caccia - CREA RS190280

DATA  
DEZEMBRO/2021

COLABORAÇÃO  
Mateus D. Zardo

ESCALA  
1:150



ASSUNTO  
**VIGAS 1º PAV.**

PRANCHA  
**14**