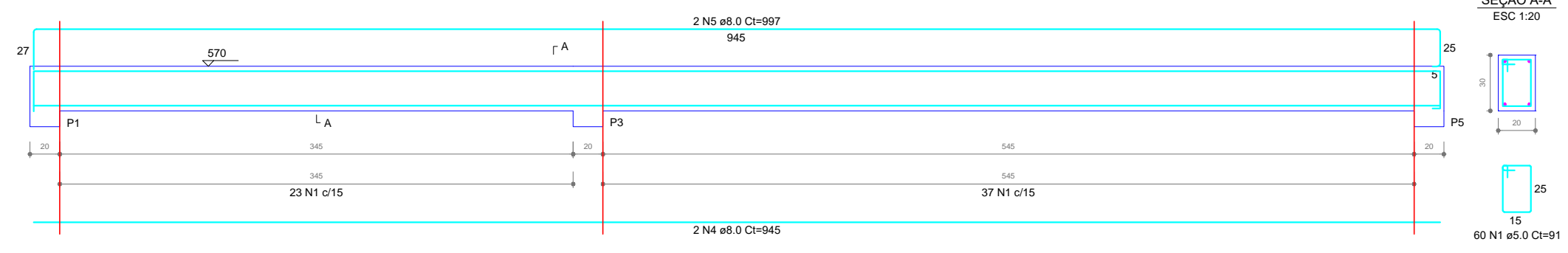
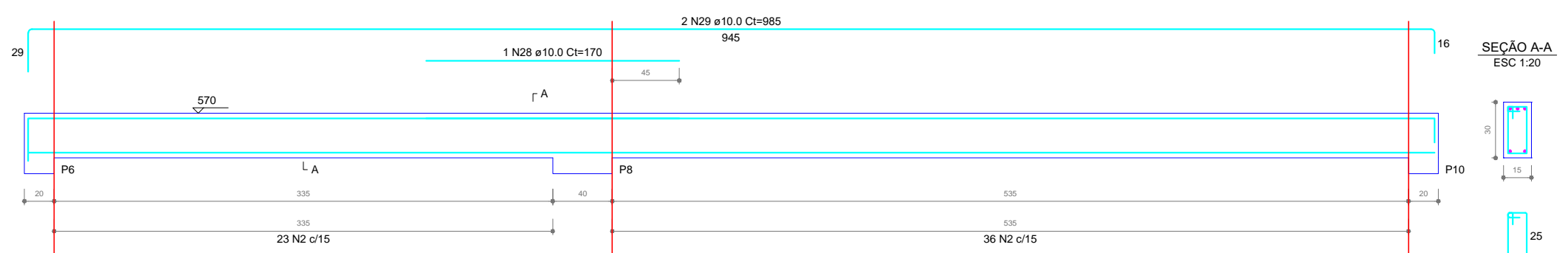


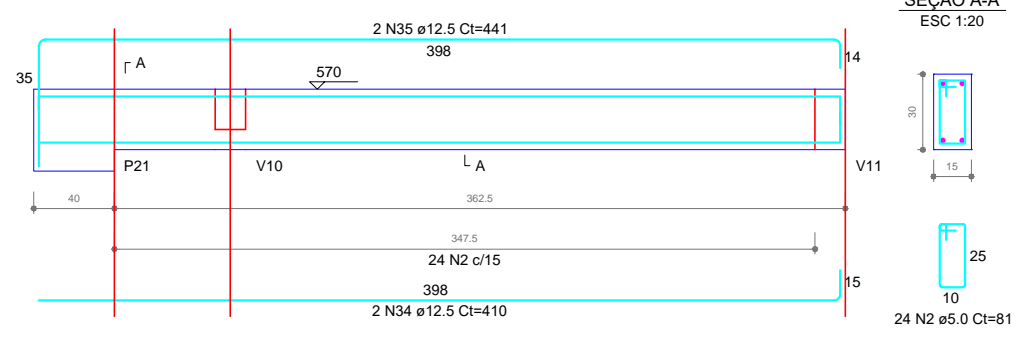
V1 (20 x 30)



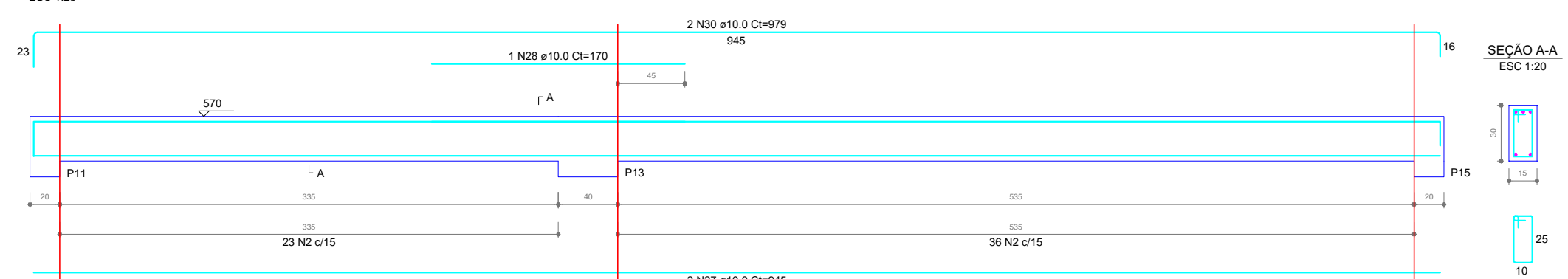
V2 (15 x 30)



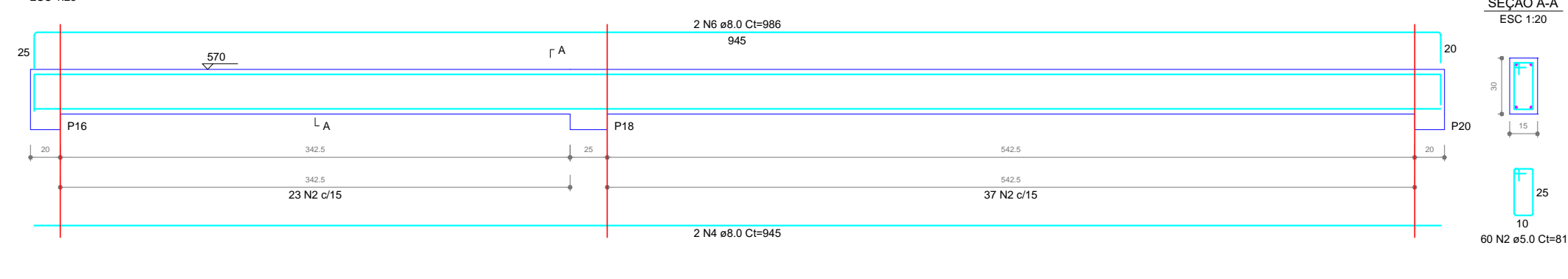
V5 (15 x 30)



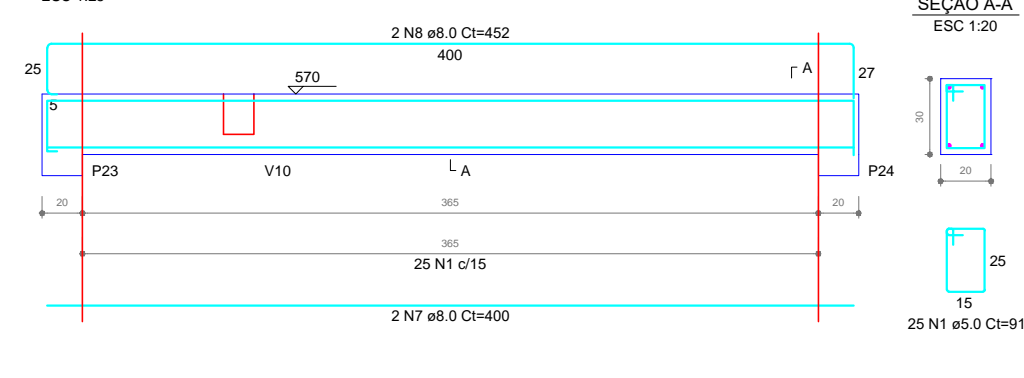
V3 (15 x 30)



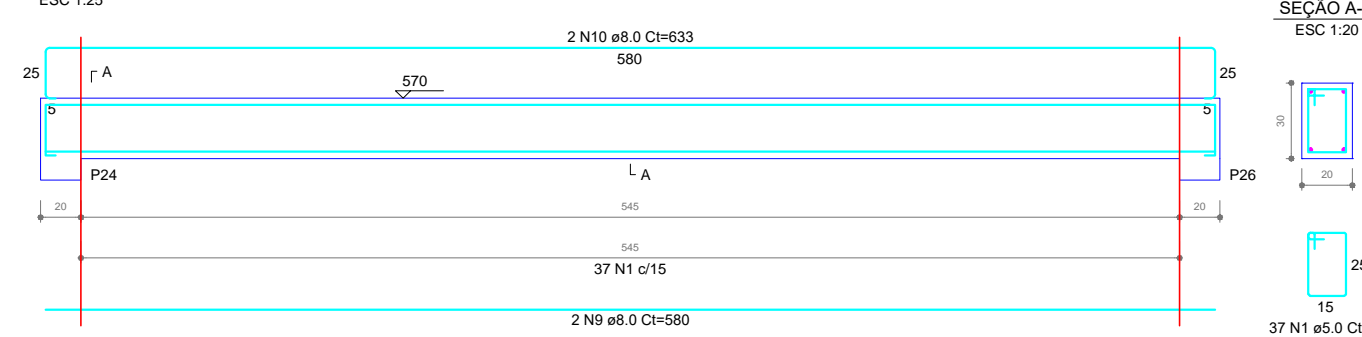
V4 (15 x 30)



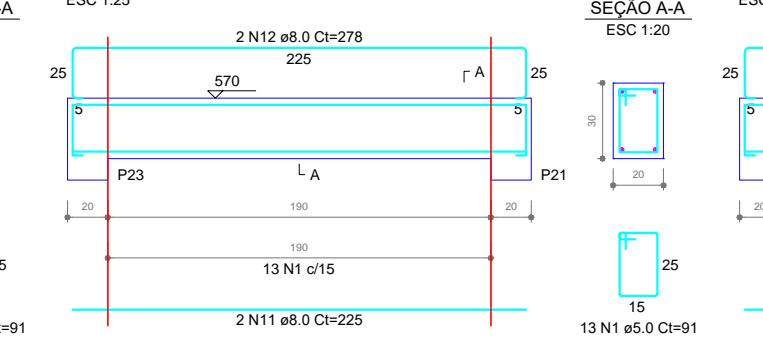
V6 (20 x 30)



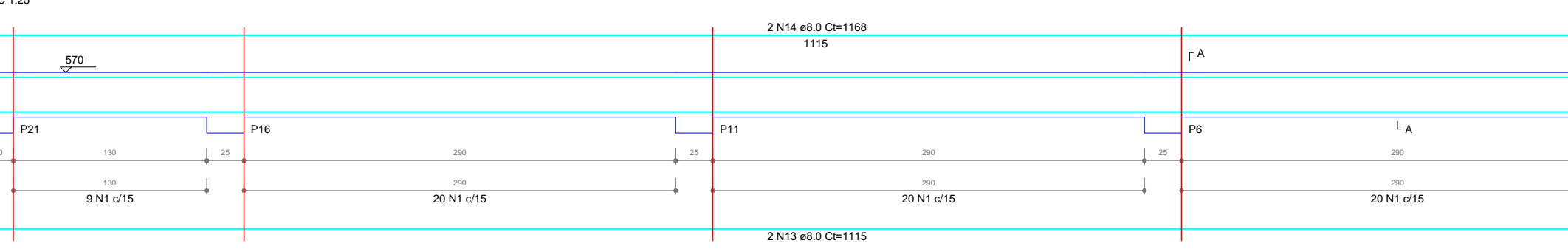
V7 (20 x 30)



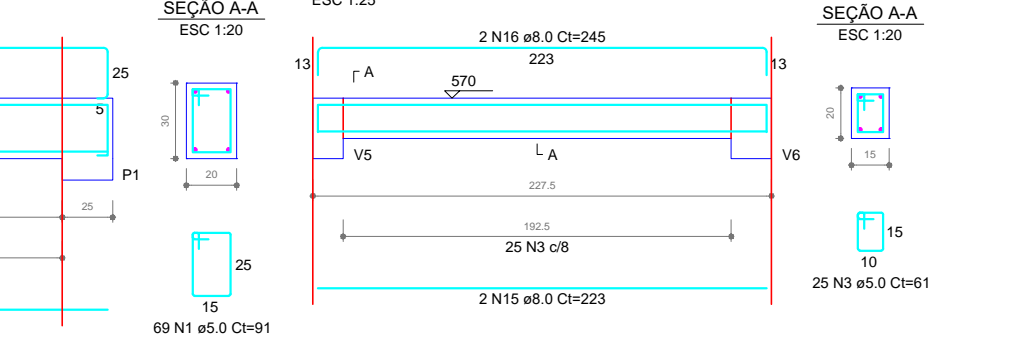
V8 (20 x 30)



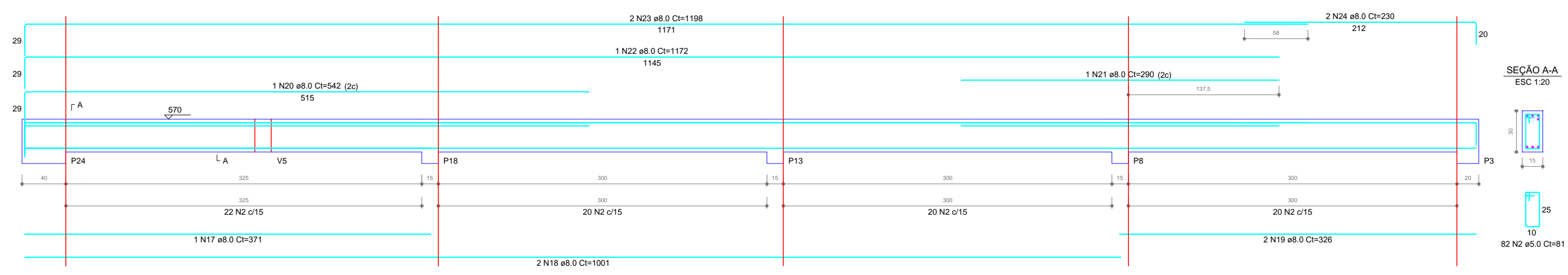
V9 (20 x 30)



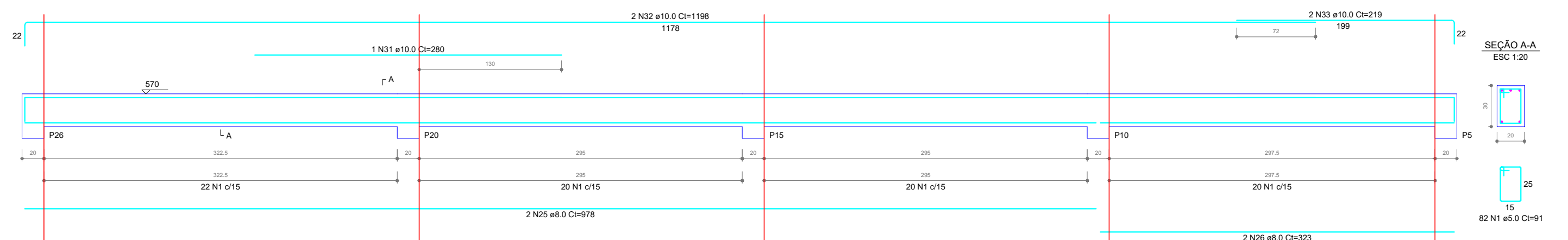
V10 (15 x 20)



V11 (15 x 30)



V12 (20 x 30)



RELAÇÃO DO AÇO

ACO	N	DIAM (mm)	QUANT	C.UNIT (cm)	C.TOTAL (cm)
CA60	1	5.0	286	91	26026
CA50	2	5.0	284	81	23004
	3	5.0	25	61	1525
	4	8.0	4	945	3780
	5	8.0	2	987	1974
	6	8.0	2	886	1772
	7	8.0	2	400	800
	8	8.0	2	452	904
	9	8.0	2	500	1000
	10	8.0	2	633	1266
	11	8.0	2	225	450
	12	8.0	2	278	556
	13	8.0	2	1115	2230
	14	8.0	2	1168	2336
	15	8.0	2	223	446
	16	8.0	2	245	490
	17	8.0	1	371	371
	18	8.0	2	1001	2002
	19	8.0	2	326	652
	20	8.0	2	542	1084
	21	8.0	1	290	290
	22	8.0	2	1172	2344
	23	8.0	2	1198	2396
	24	8.0	2	230	460
	25	8.0	2	978	1956
	26	8.0	2	323	646
	27	10.0	4	945	3780
	28	10.0	2	170	340
	29	10.0	2	985	1970
	30	10.0	2	979	1958
	31	10.0	1	288	288
	32	10.0	2	1198	2396
	33	10.0	2	219	438
	34	12.5	2	410	820
	35	12.5	2	441	882

RESUMO DO AÇO

ACO	DIAM (mm)	C.TOTAL (cm)	PESO ± 10% (kg)
CA50	8.0	288.7	125.3
	10.0	111.6	75.7
	12.5	7.7	19.9
CA60	5.0	505.6	85.7
PESO TOTAL (kg)			
CA50		219	
CA60		85.7	

Volume de concreto (C-25) = 4.89 m³
Área de forma = 72.42 m²

OBRAS / LOCAL
SEDE ESPORTIVA COM VESTIÁRIOS
Parque Leonel Antônio Paludo, R. 1º de Maio, nº 200, CENTRO, COTIPORÁ / RS

PROPRIETÁRIO
Prefeitura Municipal de Cotiporá CNPJ: 90.898.487/0001-64

RESPONSÁVEL TÉCNICA
Engenheira Civil Camila Schmitt Caccia - CREA RS190280



DATA
DEZEMBRO/2021

COLABORAÇÃO
Mateus D. Zardo

ESCALA
1:150

ASSUNTO
VIGAS 2º PAV.

PRANCHA
15